

# Smart-Boost™ Rotary Converters

# SB-7

## Quick Specs

See back for complete specs

Single Phase Input Voltage: 208 - 245 Volts

3 Phase Rated Output: 208 - 245 Volts

Minimum Single Phase Circuit: 20 Amps

Best Performance Single Motor Start: 3HP

Recommended 3 Phase Sizing: 10 Amps

Voltage Balance: Based on input +/-5-10%

**Professional. Powerful. Affordable.** Smart-Boost™ offers more than you would expect from a phase converter. Unparalleled starting power for the toughest starting applications.

### Control Panel Features

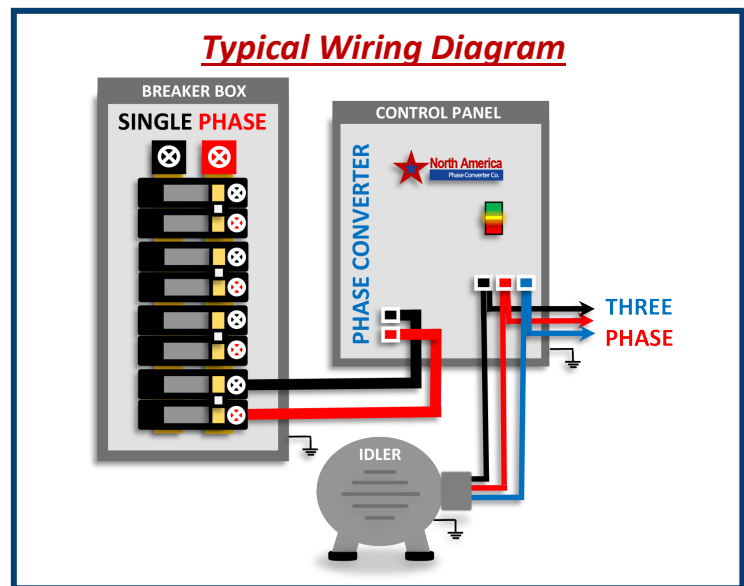
- 600% Motor Starting Boost Current
- Built-In Motor Starter with Start/ Stop Push Button Switch
- Digitally Controlled with Solid State Switches
- Complete Phase Power Failure Protection
- Power "ON" Indicator Light
- Voltage Differential Technology
- 10 Year Parts / Lifetime Labor Warranty
- Made In the USA



### Idler Generator Features

- Custom Made Rotary Phase Converter Generators
- Low Impedance/High Efficiency Design
- Custom Copper Windings and Rotor
- Made by ABB / Baldor Electric USA
- Available in ODP and TEFC
- Shielded Windings
- Made In the USA

### Typical Wiring Diagram



North America Phase Converter Co.  
2728 South 163rd Street  
New Berlin, WI 53151  
877-545-2926  
NorthAmericaPhaseConverters.com

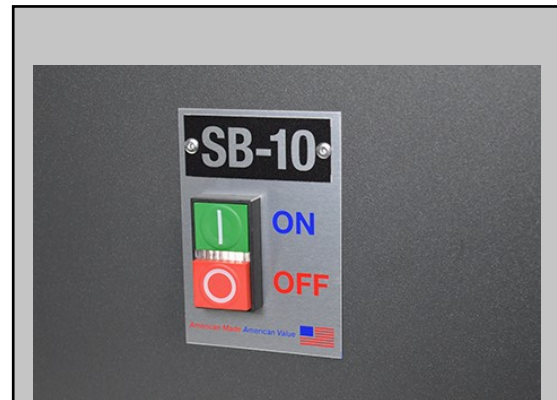


| Model                                  |                                |
|--|--------------------------------|
| Brand                                  | NAPCES                         |
| Line                                   | Smart-Boost™                   |
| Model #                                | SB-7.5                         |
| General Specifications                 |                                |
| Horse Power (HP)                       | 7.5                            |
| Kilo-watt (kW)                         | 5.6                            |
| Frequency (Hz)                         | 60                             |
| Generator Type                         | ODP                            |
| Enclosure Type                         | NEMA 1 (Indoor)                |
| Generator Frame                        | 184                            |
| Single Phase Electrical Specifications |                                |
| Voltage Input                          | 208-245                        |
| Minimum Fuse Size                      | 20                             |
| Minimum Circuit Breaker Size           | 20                             |
| Maximum Fuse Size                      | 40                             |
| Maximum Circuit Breaker Size           | 40                             |
| Minimum Wire Input                     | 8 AWG                          |
| Idle Amperage                          | 2.74                           |
| Three Phase Electrical Specifications  |                                |
| Voltage Output                         | 208-245 based on input voltage |
| Output Amperage                        | 19                             |
| Voltage Balance                        | 5-10%                          |
| Minimum Wire to Generator              | 10 AWG                         |
| Minimum Wire to Load                   | 10 AWG or based on load        |
| Dimensions & Weights                   |                                |
| Enclosure (H X W X D)                  | 18" X 12" X 8"                 |
| Idler (Approx.) Length X Diameter      | 11" X 8"                       |
| Approx. Total Shipping Weight          | 109 lbs.                       |

|  |
|--|
| <b>The SB-7 Smart-Boost™ Phase Converter is best sized for:</b>        |
| <b>Easy / Light Motor Loads - up to 5 HP</b>                           |
| <i>Examples of Easy Loads: Table Saw, Milling Machine, Drill Press</i> |
| <b>Medium Motor Loads - up to 5 HP</b>                                 |
| <i>Examples of Medium Loads: Belt Sander, Grinder, Mixer</i>           |
| <b>Hard Motor Loads - up to 3 HP</b>                                   |
| <i>Examples of Hard Loads: Gearhead Lathe, Dust Collector, Fan</i>     |
| <b>Very Hard Motor Load - up to 3 HP</b>                               |
| <i>Examples of Very Hard Motor Loads: Air Compressor, Sub. Pump</i>    |
| <b>CNC, Resistive and Inductive Loads - 10 Amps @240 Volts</b>         |

### Sizing Notes SB-7

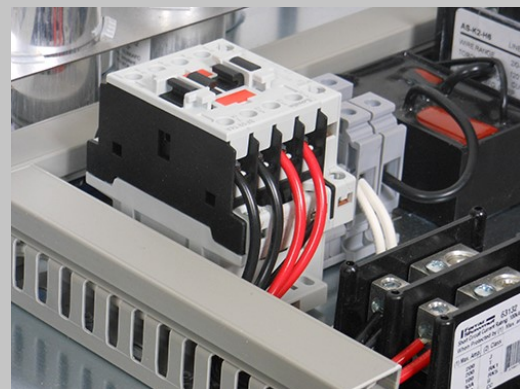
- For light/easy motor loads:** Size rotary phase converter 1.25 times larger than the motor load
- For medium motor loads:** Size rotary phase converter 1.5 times larger than the motor load
- For heavy/hard motor loads:** Size rotary phase converter double the size of motor load
- For very hard motor loads:** Size rotary phase converter double the size of motor load
- For CNC, resistive and inductive loads:** Consider *Smart-Phase™* Converters



**Built-In Motor Starter with Start / Stop Switch**



**Solid State Controller with Zero Degree Power Switches (Thyristors)**



**Complete 3 Phase Power Guard**