

Smart-Boost™ Rotary Converters

SB-10

Quick Specs

See back for complete specs

Single Phase Input Power - 208 - 245 Volts

Input Amperage Range - 30 - 50 Amps

Idler HP Rating - 10HP (7.5kW)

3 Phase Rated Output - 208 - 245 Volts

3 Phase Output Amperage - 28 Amps

Voltage Balance - Based on input +/-5-8%

Professional. Powerful. Affordable. The Smart-Boost™ offers much more than you would expect from a phase converter. Unparalleled starting power for the toughest starting applications.

Control Panel Features

- 600% Motor Starting Boost Current
- Built-In Motor Starter with Start/Stop Push Button Switch
- Digitally Controlled with Solid State Switches
- Complete Phase Power Failure Protection
- Power "ON" Indicator Light
- Voltage Differential Technology
- 10 Year Parts / Lifetime Labor Warranty
- Made In the USA



Idler Generator Features

- Custom Made Rotary Phase Converter Generators
- Made by Baldor Electric USA
- Low Impedance/High Efficiency Design
- Available in ODP and TEFC
- Custom Copper Windings and Rotor
- Shielded Windings
- Made In the USA

Easy Installation



Installation made easy with removable back plate, open side walls, oversized wire connections and laser cut knockouts including one for a twist-lock outlet.



North America Phase Converter Co.
2728 South 163rd Street
New Berlin, WI 53151
877-545-2926
NorthAmericaPhaseConverters.com



Model	
Brand	NAPCES
Line	Smart-Boost™
Model #	SB-10
General Specifications	
Horse Power (HP)	10
Kilo-watt (kW)	7.5
Frequency (Hz)	60
Generator Type	ODP
Enclosure Type	NEMA 1 (Indoor)
Generator Frame	215
Single Phase Electrical Specifications	
Voltage Input	208-245
Minimum Fuse Size	30
Minimum Circuit Breaker Size	30
Maximum Fuse Size	50
Maximum Circuit Breaker Size	50
Minimum Wire Input	6 AWG
Idle Amperage	3.24
Three Phase Electrical Specifications	
Voltage Output	208-245 based on input voltage
Output Amperage	28
Voltage Balance	10%
Minimum Wire to Generator	10 AWG
Minimum Wire to Load	10 AWG or based on load
Dimensions & Weights	
Enclosure (H X W X D)	17" X 12" X 8"
Idler (Approx.) Length X Diameter	13.5" X 9.5"
Approx. Total Shipping Weight	126 lbs.

The SB-10 Pro-Line Phase Converter is best sized for:
Easy / Light Motor Loads - up to 10HP
<i>Examples of Easy Loads: Table Saw, Milling Machine, Drill Press</i>
Medium Motor Loads - up to 10HP
<i>Examples of Medium Loads: Belt Sander, Grinder, Mixer</i>
Hard Motor Loads - up to 7.5HP
<i>Examples of Hard Loads: Gearhead Lathe, Dust Collector, Fan</i>
Very Hard Motor Load - up to 5HP
<i>Examples of Very Hard Motor Loads: Air Compressor, Sub. Pump</i>
CNC, Resistive and Inductive Loads - up to 15 Amps @240 volts

Sizing Notes SB-10

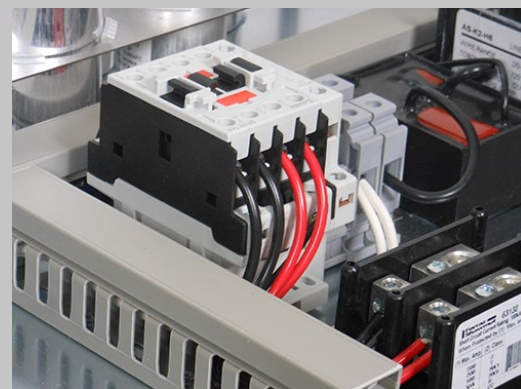
- For light/easy motor loads:** Size rotary phase converter that is closest to the total horsepower of your 3 phase loads
- For medium motor loads:** Size rotary phase converter that is closest to the total horsepower of your 3 phase loads
- For heavy/hard motor loads:** Size rotary phase converter 1.5 times larger than the motor load
- For very hard motor loads:** Size rotary phase converter double the size of motor load
- For CNC, resistive and inductive loads:** Size rotary phase converter double the size of load



Built-In Motor Starter with Start / Stop Switch



Solid State Controller with Zero Degree Power Switches (Thyristors)



Complete 3 Phase Power Guard Protection